

Trusted. Tested. Tough.®

Product information presented here reflects conditions at time of publication. Consult factory regarding discrepancies or inconsistencies.



SECTION: Z3.20.100
ZM1793
0519
Supersedes
1017

MAIL TO: P.O. BOX 16347 • Louisville, KY 40256-0347
SHIP TO: 3649 Cane Run Road • Louisville, KY 40211-1961
(502) 778-2731 • 1 (800) 928-PUMP • FAX (502) 774-3624

visit our web site:
zoellerengineered.com

X6280 & X6290 HAZARDOUS LOCATION SERIES

CLASS I, DIVISION 1, GROUPS C & D

CLASS I, ZONE 1, GROUPS IIA & IIB

PRODUCT FEATURES

Commercial Duty Sewage

2" (50 mm) Solids / 2" & 3" Discharge



APPLICATIONS



WARNING Not for use in acidic atmospheres.

- Pumping Stations
- Parking Lot Dewatering
- Parking Garage Sumps
- Commercial Sewage

MATERIAL FEATURES

PUMP:

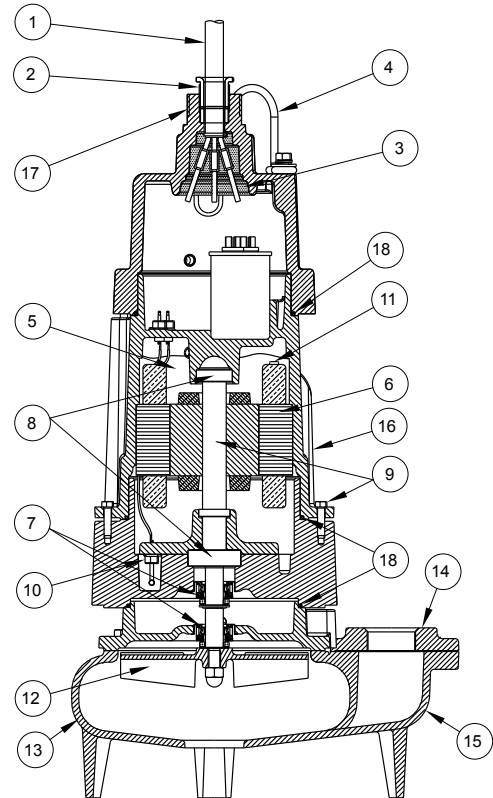
- Solids - 2" (50 mm) spherical capability
- Discharge Size - 2" or 3" NPT Vertical
- Seals - dual mechanical
Upper: carbon/stationary ceramic/rotary
Lower: carbon/stationary silicon carbide/rotary
- Construction - Cast iron ASTM A-48, Class 30, 30,000# tensile strength, protected with a corrosion resistant baked on epoxy powder coating.
- Seal leak probes
- Balanced concentric pump housing and impeller
- Attaching Hardware - 304 stainless steel
- Square Ring Seals - Viton
- Impeller - Cast iron Vortex
- Optional: Additional cord length ____ ft.(m)
 Silicon carbide seals
 Bronze impeller (X6290 only)
 Non-sparking rail systems

MOTOR:

- 1 Phase - 115/200/230 Volt, 1750/3450 RPM
- 3 Phase - 200/230/460/575 Volt, 1750/3450 RPM
- cCSAus rated Class I, Division 1, Groups C & D and Class I, Zone 1, Groups IIA & IIB Construction
- Tested to FM standards 3600 & 3615 by CSA
- Stator - Class B or F insulation and lead wires
- 416 SS motor shaft
- Oil-filled motor housing
- Finned cast iron housing for faster heat dissipation
- Integral overload protection (1-phase)
- Thermal Sensors with lead wires (3-phase)
- Ball Bearings - Upper and lower high carbon chromium steel
- Power Cable Length - 25' (7.6 m)

ENGINEERING FEATURES:

1. 25' (7.6 m) of heavy duty power and sensor cable
2. Protected cable entrance
3. Each conductor is individually sealed to eliminate cord wicking of liquids
4. Lifting bracket
5. Oil-filled motor housing assures uniform heat distribution, lubricates bearings, and conducts heat for cooler running.
6. Heavy duty motor features ball bearing construction. Class B or F motor insulation is double dipped and baked.
7. Tandem seals.
Carbon/stationary, silicon carbide/rotary Buna-N elastomer lower seal
Carbon/stationary, ceramic/rotary Buna-N elastomer upper seal
8. Upper and lower high carbon chromium steel ball bearings
9. Stainless steel shaft and hardware resists corrosion
10. Standard: Seal leak detector probes



SK1986

11. Standard: Thermal sensor protection. Three phase motors have 2 normally closed temperature sensors imbedded in windings. One phase motors have overload protection.
12. Balanced vortex impeller with top pump out vanes for seal protection.
13. Concentric case reduces radial loading for longer bearing and seal life.
14. 2" & 3" NPT vertical discharge
15. Units protected with corrosion resistant baked on epoxy powder coating
16. Finned Motor Housing for superior heat dissipation
17. 1.5" NPT threads available for cordage protection
18. Viton Square Rings

For additional information on X6200 Series pumps, refer to catalog on technical data, ZM1794; performance data, ZM1795; dimensional data, ZM1796; guide specifications, ZM1836 and ZM1837.

For information on additional Zoeller products refer to catalog on rail systems, ZM1347; control panels, ZM1342; float switch brackets and pump lifting cables, ZM1328; check valves and piping accessories, ZM1348.



X6404 & X6405 HAZARDOUS LOCATION SERIES

CLASS I, DIVISION 1, GROUPS C & D

CLASS I, ZONE 1, GROUPS IIA & IIB

PRODUCT FEATURES

Commercial Duty Sewage

3" Solids (76 mm) / 4" Discharge



APPLICATIONS



WARNING Not for use in acidic atmospheres.

- Pumping stations
- Parking lot dewatering
- Parking garage sumps
- Commercial sewage



MATERIAL FEATURES

PUMP:

- Solids - 3" (76 mm) spherical capability
- Discharge size - 4" ANSI horizontal
- Seals - dual mechanical
Upper: carbon/stationary ceramic/rotary
Lower: carbon/stationary silicon carbide/rotary
- Construction - Cast iron ASTM A-48, Class 30, 30,000# tensile strength, protected with a corrosion resistant baked on epoxy powder coating.
- Seal leak probes
- Balanced concentric pump housing and impeller
- Attaching Hardware - 304 stainless steel
- Square Ring Seals - Viton
- Impeller - Cast iron vortex impeller
- Optional: Additional cord length ____ ft. (____m)
 Silicon carbide seals
 Non-sparking rail systems

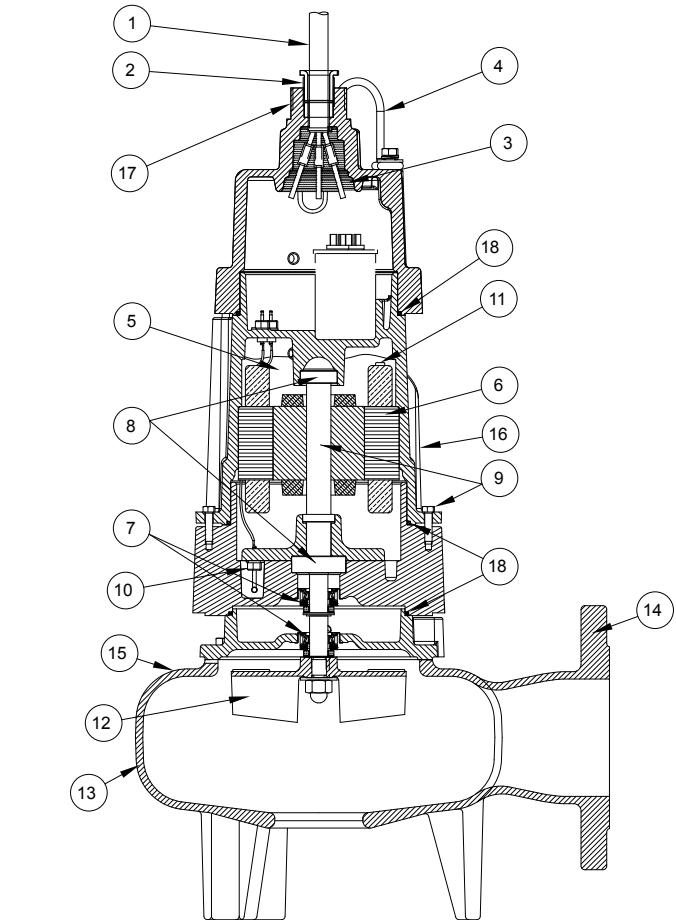


MOTOR:

- 1 Phase - 200/230 Volt, 1750 RPM
- 3 Phase - 200/230/460/575 Volt, 1750 RPM
- cCSAus rated Class I, Division 1, Groups C & D and Class I, Zone 1, Groups IIA & IIB construction
- Tested to FM standards 3600 & 3615 by CSA
- Stator - Class B insulation and lead wires
- 416 SS motor shaft
- Oil-filled motor housing
- Finned cast iron housing for faster heat dissipation
- Integral overload protection (1-phase)
- Thermal sensors with lead wires (3-phase)
- Ball bearings - Upper and lower high carbon chromium steel
- Power cable length - 25' (7.6 m)

ENGINEERING FEATURES:

1. 25' (7.6 m) of heavy duty power and sensor cable
2. Protected cable entrance
3. Each conductor is individually sealed to eliminate cord wicking of liquids.
4. Lifting bracket
5. Oil-filled motor housing assures uniform heat distribution, lubricates bearings, and conducts heat for cooler running.
6. Heavy duty motor features ball bearing construction. Class B motor insulation is double dipped and baked.
7. Tandem seals.
Carbon/stationary, silicon carbide/rotary Buna-N elastomer lower seal
Carbon/stationary, ceramic/rotary Buna-N elastomer upper seal
8. Upper and lower high carbon chromium steel ball bearings
9. Stainless steel shaft and hardware resists corrosion
10. Standard: Seal leak detector probes
11. Standard: Thermal sensor protection. Three phase motors have 2 normally closed temperature sensors imbedded in windings. One phase motors have overload protection.
12. Balanced vortex impeller with top pump out vanes for seal protection. Keyed and bolted to shaft.
13. Concentric case reduces radial loading for longer bearing and seal life
14. 4" ANSI flanged discharge
15. Units protected with corrosion resistant baked on epoxy powder coating
16. Finned motor housing for superior heat dissipation
17. 1.5" NPT threads available for cordage protection
18. Viton square rings.



SK1988

For additional information on X6400 Series pumps, refer to catalog on technical data, ZM1794; performance data, ZM1795, dimensional data, ZM1797 and guide specifications, ZM1838.

For information on additional Zoeller products refer to catalog on rail systems, ZM1347; control panels, ZM1342; float switch brackets and pump lifting cables, ZM1328; check valves and piping accessories, ZM1348.